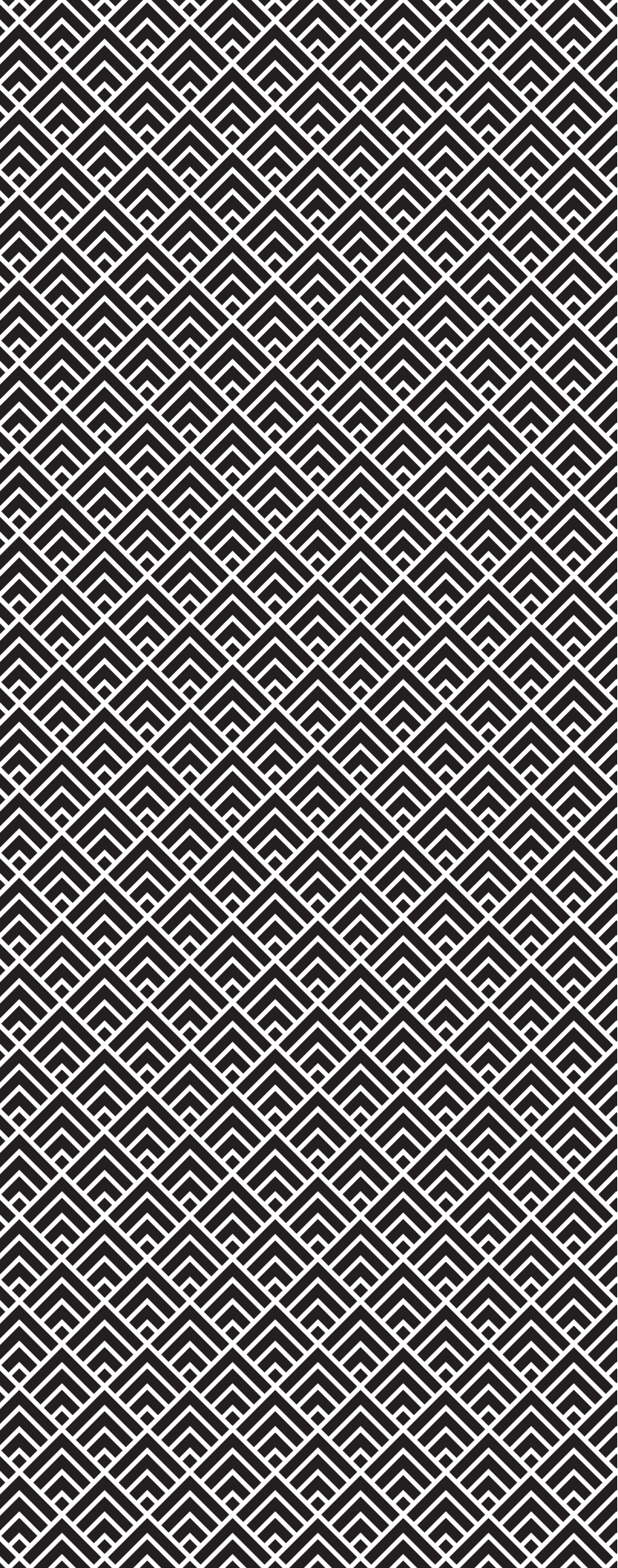




HAUSS **↑** DESKs





Desks

7300 NW 35th Ave Miami, FL. 33147  
Tlf: +1 (786) 345 1760  
Fax: +1 (786) 228 8096  
info@1hauss.com  
www.1hauss.com





CONRAD  
DESK

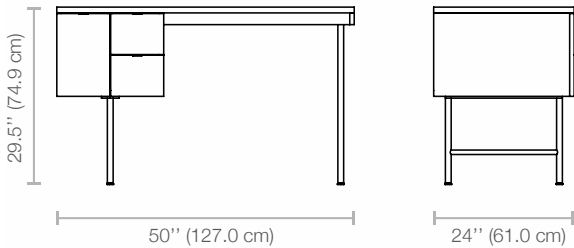
1  
HAUSS



# CONRAD

## DESK

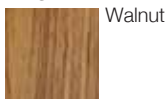
# 1 HAUSS



### Technical Specifications

- Self closing drawers
- 1 large drawer to hold hanging files (8½ x 11" letter size)
- 2 small drawers to hold supplies
- Brushed aluminum drawer pulls
- CARB Phase 2 "California Air Resource Board" compliant, which is a rating for off-gassing
- Walnut veneer on Engineered wood substrate
- Stainless Steel Base – 1" round steel tubing
- Base is welded then polished to a brushed finish
- Non-marking leveler feet which allows piece to work on uneven or angled floors
- All hardware and tools for assembly included

### Finish:



Walnut

### Legs:



Stainless Steel

### Shipping information

- # of boxes: 1
- CBM: 0.404
- Total Weight: 64 Kg

**Non-stock item:** Subject to 90 to 120 days lead time

### Warranty

- 1 year warranty





FINCH  
DESK

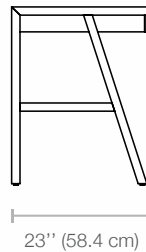
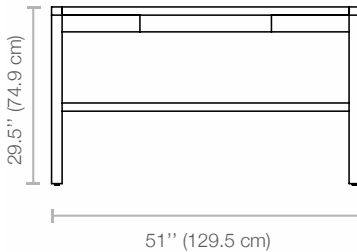
1  
HAUSS



# FINCH

## DESK

1  
HAUSS



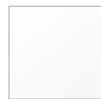
### Technical Specifications

- 2 drawers for simple storage
- Desk top and drawers are Natural Ash veneer/Lacquer on Engineered wood substrate
- CARB Phase 2 "California Air Resource Board" compliant, which is a rating for off-gassing
- Legs and brace Solid Ash Wood
- Non-marking plastic feet
- All hardware and tools for assembly included

### Finish:



Natural Ash



White Lacquer

### Legs:



Solid FSC-Certified Ash

### Shipping information

- # of boxes: 1
- CBM: 0.255
- Total Weight: 35 Kg

**Non-stock item:** Subject to 90 to 120 days lead time

### Warranty

- 1 year warranty



JUNCTION

DESK

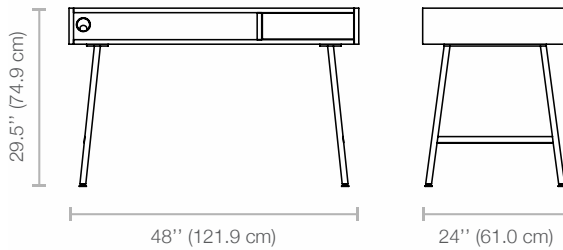
1  
HAUSS



# JUNCTION

## DESK

1  
HAUSS



### Technical Specifications

- Push-to-open drawer hardware
- 1 large open compartment in front with cable management fitting
- Open trough in desk top with cable management fitting
- CARB Phase 2 "California Air Resource Board" compliant, which is a rating for off-gassing
- Walnut veneer/Lacquer on Engineered wood substrate
- Stainless Steel Base – 1" square Stainless steel tubing
- Base is welded then polished to a brushed finish
- Non-marking leveler feet which allows piece to work on uneven or angled floors
- All hardware and tools for assembly included

### Finish:



Walnut



White Lacquer

### Legs:



Stainless Steel

### Shipping information

- # of boxes: 1
- CBM: 0.294
- Total Weight: 47 Kg

**Non-stock item:** Subject to 90 to 120 days lead time

### Warranty

- 1 year warranty

